

Content

New wool 95%
Polyamide 5%

Flame Resistance

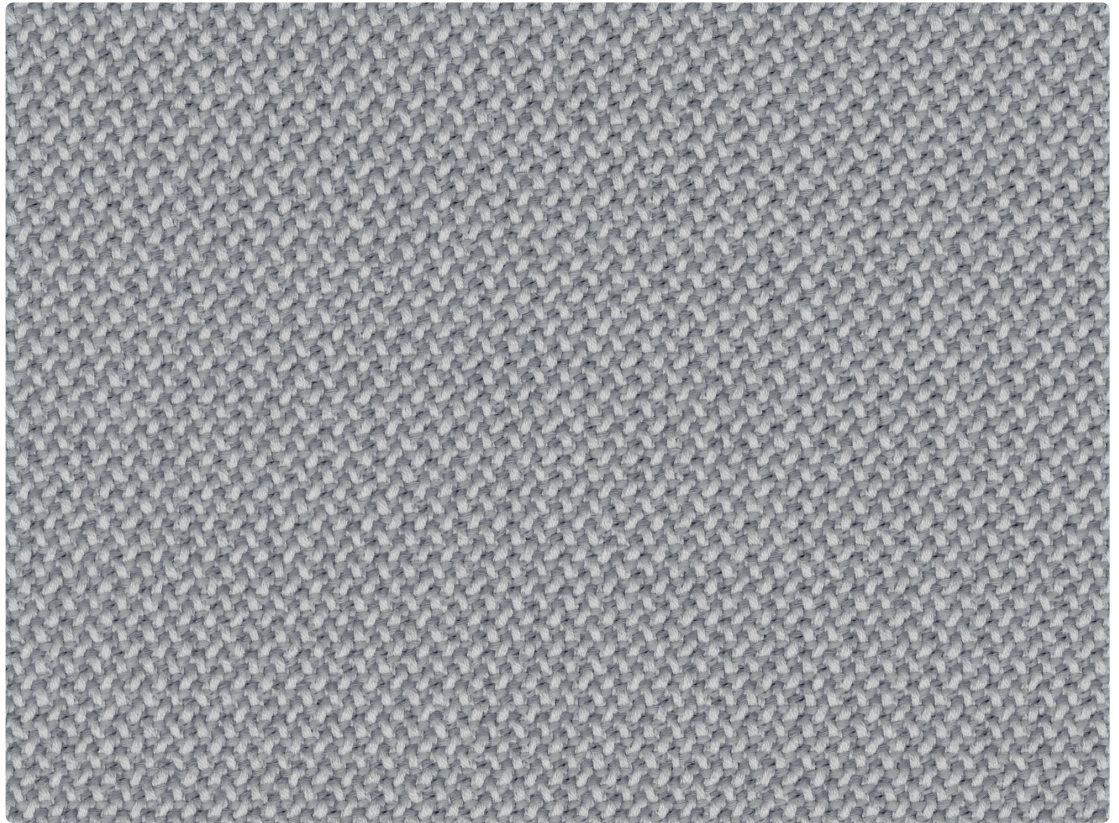
FAR 25.853 (12 sec. vertical)
CAL TB 117-2013
DIN 4102-1 B2
EN 13501-1
EN 1021-1 and -2
BS 5852:2006 (part 1)
BS 5852:2006 (part 2) Crib 5
BKZ: 5.3 SN 198898
UNI 9175 (1 IM)
IMO: 2014/90/EU/Marine
Equipment Directive

Lightfastness

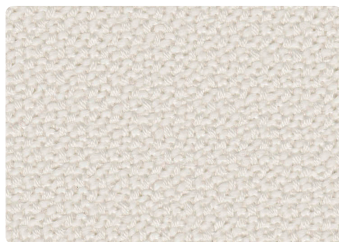
Min 5-8 EN ISO 105-B02

Maintenance

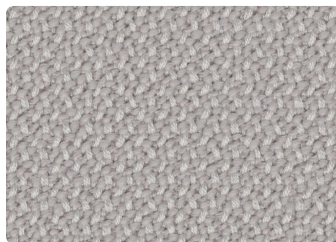
Dry clean



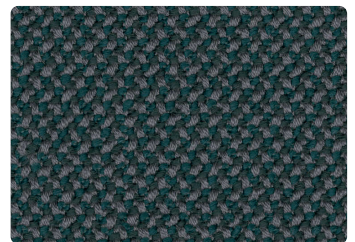
RCR95 Chalk



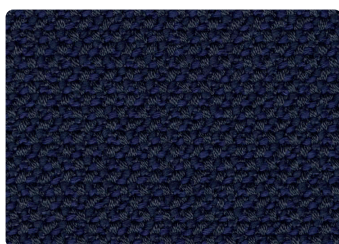
RCR02 Snow



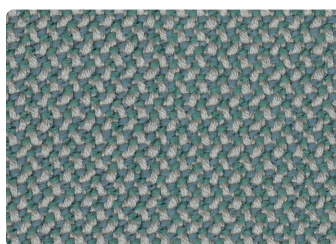
RCR34 Calla



RCR82 Jaspis



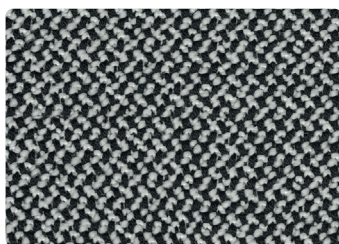
RCR90 Navy



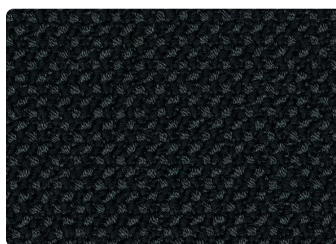
RCR86 Lake



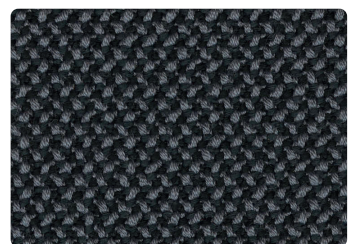
RCR97 Zinn



RCR16 Pepper



RCR08 Black



RCR25 Asphalt

Please use this sample card as indicative, only. It is provided as a guide. There may be variations between this sample card and the real samples.