

Content

Acrylic 43%
Cotton 25%
Polyester 15%
Viscose 14%
Wool 3%

Flame Resistance

California Technical
Bulletin 117
EN1021 1/2
British Standard 5852:
1990 Source 5 (crib 5)

Lightfastness

ISO 4/5

Abrasion

25,000 rubs
Martindale method

Maintenance

Clean with solvent-based
cleaning agent



06PE Ivory



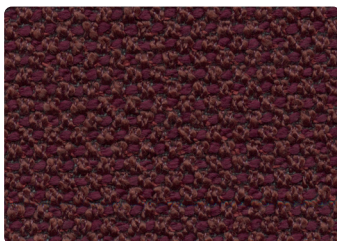
05PE Sand



04PE Taupe



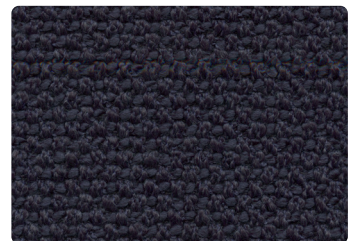
02PE Brick



01PE Burgundy



03PE Lagoon



08PE Blue



09PE Dark Grey



07PE Light Grey

Please use this sample card as indicative, only. It is provided as a guide.
There may be variations between this sample card and the real samples.