



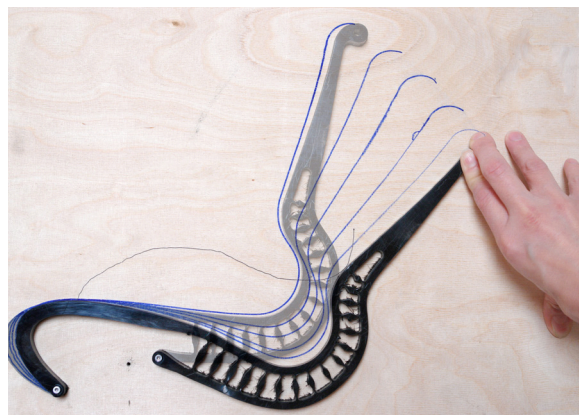
Setu Chairs®

Setu

Effortless comfort, anywhere

Designed by Studio 7.5

The Setu Chair's function and contours were shaped by the changing world around us. We work collaboratively in a variety of less formal spaces, moving around more and more throughout the day. As we're expected to work anywhere and everywhere, we need furniture that can keep up. Enter Setu.



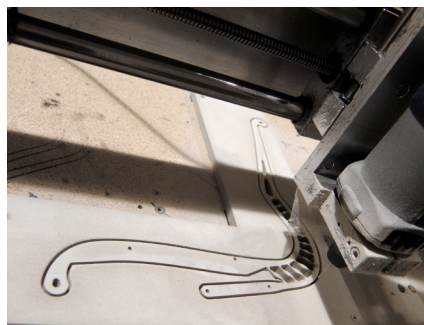
Bends and flexes with you

Setu features the Kinematic Spine, which uses two types of polypropylene to control resistance and support your weight as you recline. Without requiring adjustments, it bends and flexes with every movement – responding to your body's natural movements and providing the same experience from chair to chair.

The Kinematic Spine bends and flexes with every movement, responding to the natural ways your body moves.

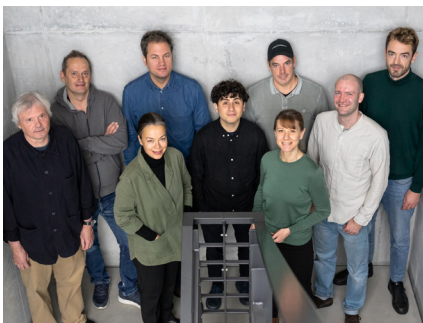






Design

The typical task chair design story goes like this: start with an idea and shape it into the world around you. But in designing Setu, the Berlin-based Studio 7.5 flipped the script, letting the world around us shape the chair. It is inspiration through observation. Together with Studio 7.5, we combined design expertise with manufacturing excellence and studied, learned, asked questions and then relearned.



Studio 7.5

About Studio 7.5

When Burkhard Schmitz and Carola Zwick started their design studio as a team of six in 1992, they were looking for the freedom to work on projects that interested them. And for the freedom from bosses and titles. "Everybody does everything," says Schmitz, speaking for the group that also includes Carola's brother, Roland Zwick. "That's how we cultivate ideas and maintain our openness and curiosity."

They find designing office chairs to be most rewarding and have worked with Herman Miller on the Setu Chair, the award-winning Mirra Chair, Mirra 2, Cosm and Zeph. "We define not only how the chair looks but how it performs," Carola says. As to how these chairs perform for you, they provide comfort no matter how or where you sit.



Setu's Intercept Suspension adapts to your sitting bones, providing contouring comfort as well as aeration.



Setu features upholstery with a C-Layer Suspension, providing a degree of structural support.

Seamless comfort

The Kinematic Spine works in concert with the breathable, temperature-neutral and durable Intercept Suspension – originally a Cosm innovation – for seamless comfort wherever you are. The upholstered Setu features a C-Layer Suspension that works with a variety of textiles, adding a degree of structural support to the fabric.

Every molecule counts

Setu's dematerialised, environmentally sensitive design uses less material – only 8 kilos for the multipurpose chair – to support more people, up to 136 kilos. With only one adjustment for height and a bumper that protects and enhances the chair's aesthetic, it's been painstakingly shaped and reshaped to ensure that every molecule falls into the right place to deliver the desired comfort and functionality. Setu is a small chair with a big impact, proving that sometimes less really is more.



Every part of the Setu Chair was painstakingly shaped and reshaped to ensure that each molecule falls into the right place to deliver the desired functionality.



Seamless support for any space

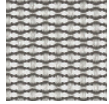
From the graceful curve of its ribbon arms to the durable, silver alloy base, Setu's minimal design aesthetic and customisable nature let it blend in or serve as a focal point. With its dipped-in-colour option – one hue from top to bottom – Setu complements both a variety of spaces and other seating options like its fellow Studio 7.5- designed Cosm Chair. Its only adjustment controls the height, so anyone who uses Setu can make one quick change, experience ergonomic support and get to work.



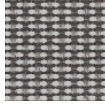
Materials Setu Chairs

Suspension Intercept

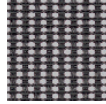
Price Category 1



Mineral
84503



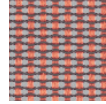
Carbon
84502



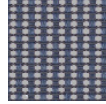
Graphite
84501



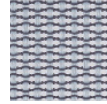
Cocoa
84507



Canyon
84506



Nightfall
84504



Glacier
84505

Frame and arm finishes



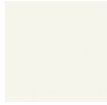
Graphite
G1



Carbon
CRB



Mineral
VPR



Studio White
98

Base/linkage finishes



Graphite
G1



Silver Alloy
L7



Semi-polished
5Y

Dipped in Color

Suspension Intercept

Corresponding
frame/linkage
finish

Corresponding
Chassis/Base
finishes

Price Category 1



Nightfall
84504



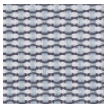
Nightfall
DN2



Nightfall
DN2



Semi Polished
5Y



Glacier
84505



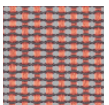
Glacier
DB3



Glacier
DB3



Semi Polished
5Y



Canyon
84506



Canyon
DR1



Canyon
DR1



Semi Polished
5Y

Specs

Family
Multipurpose Chair
Side Chair
Stool

Overview
Maximum User Weight

300 lbs / 136 k g

Seat Height
Multipurpose Chair
Side Chair
Stool

399-551 mm
470 mm
663-853 mm

Arm Options
No Arms
Fixed Arms

Environmental Highlights
Recyclability
BIFMA level
SCS Indoor Advantage

Up to 90%
3
Gold

Seat Depth
Fixed Seat

Base Options

5-Star Base with Castors (Standard- or High-Height)
4-Star Base with Glides (Fixed-Height only)

Seat/Back Material
Intercept Suspension Optional
Suspended Upholstery Optional



**For more information, please visit
hermanmiller.com**

Herman Miller, the Herman Miller logo, Zeph, Zeph by Herman Miller, Mirra, Mirra 2, Setu and Cosm are among the registered trademarks of MillerKnoll and its subsidiaries. All other trademarks are the property of their respective owners.

© 2024 MillerKnoll
All rights reserved.